

MT7 SERIES

LS Tractor



MT7101CPS / MT7101CSPS
PREMIUM UTILITY TRACTORS

5-YEAR LIMITED WARRANTY. SEE DEALER FOR DETAILS

MT7 SERIES

PREMIUM UTILITY TRACTORS

RECOMMENDED
IMPLEMENTS/
ATTACHMENTS



LOADER:
High Capacity With
An Abundance Of
Standard Features



LAND GRADER:
Heavy Steel
Construction, High
Strength, Designed
For Use In Demanding
Applications



ROTARY CUTTER:
Durable Heavy Steel
Design Providing
Quality And Strength



BOX BLADE:
Features A Heavy
Welded Steel
Design For Use In
Demanding Applications

FEATURES

- 5 Year Warranty*
- Available In 100.6 HP
- Cab Versions
- Unballasted Weight Up To 7,714 lbs.
- 2 Sets Of Rear Remotes Standard With Float And Detent Functionality
- 40F x 40R (Incl. Creep) Power Shuttle Or 32F x 32R (Incl. Creep) Semi-Powershift With Power Shuttle Transmission



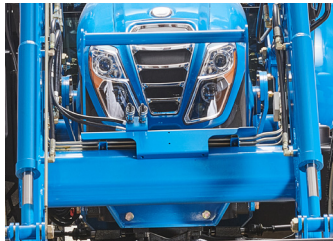
High Capacity Loader
High Performing Lift
Capacity, Among The
Industry Leaders In Lift
Height (139.9 in.)



Goodyear LSW Tires
Enable Better Traction,
Less Field Compaction



Spacious Cab
Providing a Roomy
Climate Controlled
Working Environment



**Standard Factory Grille
Guard W/ Loader**
Full Length Grille Guard
Protects Body Panels And
Radiator



Durability and Capacity
Heavy-Duty Frame And Lift
Cylinders Enable Three-Point
Lift Capacity Up To
5,139 lbs.



Power Shuttle Transmission
Provides Efficiency And
Comfort In Demanding
Applications (Standard)



Right-Side Cab Access
Enables Operators To Access
Both Sides Of The Cab
(Door And Steps)



**Four Standard
Rear Worklights**
Provides Significant
Illumination During
Night Operation



Semi-Powershift
Provides Push-Button Control
In Demanding Commercial
Applications



MT7101CPS / MT7101CSPS

SPECIFICATIONS

CATEGORY			FRONT END LOADER	LL8100
ENGINE	MT7101CPS	MT7101CSPS	TRACTOR APPLICATION	MT7 SERIES
Type	4 Cylinder, CRDI, Water-cooled		Bucket Size (in.)	83
Model	F5G		Maximum Lift Height (in.)	139.9
Emission	Tier 4 Final		Clearance With Attachment Dump (in.)	103.3
Engine HP (kW)	100.6 (75)		Reach At Maximum Height (in.)	23.4
PTO (HP)	85.5		Maximum Dump Angle (deg.)	57
Rated Speed (rpm)	2,200		Maximum Rollback Angle (deg.)	46
Displacement (in³.)	206.7		Digging Depth (in.)	4.6
Fuel Tank Capacity (gal.)	30.4		Overall Height In Carry Position (in.)	68.8
DRIVE TRAIN			Lift Capacity (At Pivot Pin) (lbs.)	5,139
Transmission Type (Option)	Power Shuttle	Semi-Powershift with Power Shuttle	Breakout Force (At Pivot Pin) (lbs.)	5,313
No. Of Speed	40 x 40	32 x 32	Approx. Weight (Loader W/O Bucket) (lbs.)	1,660
Forward Speed (mph)	0.1 - 22.6			
PTO				
Type	Independent / Ground Speed PTO			
Rear (rpm)	540 / 750 / 1,000			
HYDRAULIC SYSTEM				
Control System	Position / Draft			
Implement Pump (gpm)	15.7			
Steering Pump (gpm)	6.5			
Total Flow (gpm)	22.2			
Category (3pt Hitch)	CAT II			
Hitch Lift Capacity (lbs.)	8,378			
Remote Ports	3 Pairs (Front) 2 Pairs (Rear)			
DIMENSION				
Overall Length (Frame To Link, in.)	152.2			
Overall Width With Tires (in.)	78.7			
Wheelbase (in.)	90			
Height To Top (in.)	105.4			
Total Weight Without Ballast (lbs.)	7,714			
TIRE SIZE				
Front / Rear R14	FW: 340/70R28, RR: 460/75R38			
Front / Rear Ag	F: 13.6-24 R: 18.4-34			

Additional Equipment Available

- Standard Air Suspension Seat With Swivel
- Standard Electric Engaged Independent PTO
- Standard Instructor Seat
- Standard Interior Power Source
- Optional Third Rear Remote

**All Specs and features are subject to change, and pictures could include optional equipment etc.*

- Additional Equipment Available**
- Standard Air Suspension Seat With Swivel
 - Standard Electric Engaged Independent PTO
 - Standard Instructor Seat
 - Standard Interior Power Source
 - Optional Third Rear Remote



LS Tractor USA | P: 252.984.0700 | F: 252.984.0701 | LSTractorUSA.com
(Corporate Address) 6900 Corporation Parkway, Battleboro, NC

